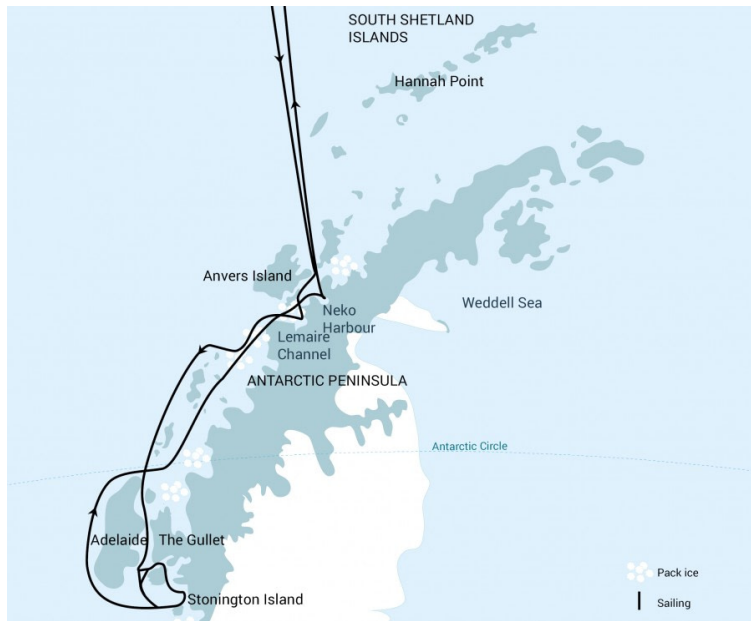


# Antarctica - Polar Circle - Deep South Voyage

Explore the farthest waters of the far south as you cross the Antarctic Circle in search of various whale species, including humpbacks, minkes, and fin whales



Title:	Antarctica - Polar Circle - Deep South Voyage
Dates:	20 Mar - 2 Apr, 2023
Tripcode:	PLA32A23
Duration:	13 nights
Ship:	m/v Plancius
Embarkation:	Ushuaia
Disembarkation:	Ushuaia
Language:	English speaking voyage
Important:	Diving is an optional activity. Experience with cold-water diving and dry-suit dives (at least 30) is a must!

## ITINERARY

*PLEASE NOTE: All itineraries are for guidance only. Programs may vary depending on ice, weather, and wildlife conditions. Landings are subject to site availabilities, permissions, and environmental concerns per IAATO regulations. Official sailing plans and landing slots are scheduled with IAATO prior to the start of the season, but the expedition leader determines the final plan. Flexibility is paramount for expedition cruises. The average cruising speed of our vessel is 10.5 knots.*

This Polar Circle and Antarctic Peninsula cruise will take you further south of Antarctica, crossing the Polar Circle. This expedition cruise passes through waters travelled by Humpback, Minke and Fin whales. Anchoring in various spots around the region, the expedition offers the chance to hike, and dive in the iceberg-heavy waters.

### Day 1: End of the world, start of a journey

Your voyage begins where the world drops off. Ushuaia, Argentina, reputed to be the southernmost city on the planet, is located on the far southern tip of South America. Starting in the afternoon, you embark from this small resort town on Tierra del Fuego, nicknamed “The End of the World,” and sail the mountain-fringed Beagle Channel for the remainder of the evening.

### Day 2 - 3: Path of the polar explorers

Over the next two days on the Drake Passage, you enjoy some of the same experiences encountered by the great polar explorers who first charted these regions: cool salt breezes, rolling seas, maybe even a fin whale spouting up sea spray. After passing the Antarctic Convergence – Antarctica’s natural boundary, formed when north-flowing cold waters collide with warmer sub-Antarctic seas – you are in the circum-Antarctic upwelling zone. Not only does the marine life change, the avian life changes too. Wandering albatrosses, grey-headed albatrosses, black-browed albatrosses, light-mantled sooty albatrosses, cape pigeons, southern fulmars, Wilson’s storm petrels, blue petrels, and Antarctic petrels are a few of the birds you might see.

### Day 4 – 5: Entering Antarctica

Gray stone peaks sketched with snow, towers of broken blue-white ice, and dramatically different wildlife below and above. You first pass the snow-capped Melchior Islands and Schollaert Channel, sailing between Brabant and Anvers Islands.

The intended route for your Antarctic adventure includes:

**Cuerville Island** – A small precipitous island nestled between the mountains of the Antarctic Peninsula and Rongé Island, Cuerville houses a large colony of gentoo penguins and breeding pairs of brown skuas.

**Neko Harbour** – An epic landscape of mammoth glaciers and endless wind-carved snow, Neko Harbour offers opportunities for a Zodiac cruise and landing that afford the closest views of the surrounding alpine peaks.

**Paradise Bay** – You could take a Zodiac cruise in these sprawling, ice-flecked waters before sailing to the Lemaire Channel.

## Day 6 – 8: Through the Gullet

After a comfortable night of sailing, you wake among the many islands south of Lemaire Channel. You are now near the Antarctic Circle. At this point, a voyage through the aptly named Gullet – a narrow but picturesque channel between Adelaide Island and the Antarctic Continent is possible if the ice isn't too dense. You can explore this area from the prow of the ship getting the closest possible contact with the polar terrain as you venture southward.

Along the way, you may enjoy the following visits:

**Pourquoi Pas Island** – You might circumnavigate this island, named after the ship of the famous French explorer Jean-Baptiste Charcot. This location is known for its tight fjords and lofty, glacier-crowded mountains.

**Horseshoe Island** – This is the location of the former British Base Y, a remnant of the 1950s that is now unmanned though still equipped with almost all the technology it had while in service.

**Stonington Island** – Home to the former US East Base and British Base E, which was occupied until 1975, this island marks the southernmost landing site of the trip – 68° south. If a landing here is possible, your road turns north again afterward, through the Gunnel Channel.

**Hanusse Bay** – Enjoy the scattered icebergs of this scenic bay, which offers a good chance of spotting whales.

## Day 9 – 11: The whales of Crystal Sound

You are near the Antarctic Circle again, cutting north through the countless ice floes of Crystal Sound. Humpback whale sightings are likely, and your approach to the Fish Islands offers the possibility of a Zodiac cruise or even a landing. Whatever the case, the views beyond comparison in this area. There may also be more Adélie penguins congregating among the bergs nearby. Petermann & Pléneau Islands provide a great variety of birdlife, along with possibilities for Zodiac cruises among icebergs that are highly popular among leopard and crabeater seals. Minke whales, humpbacks, and gentoo penguins can also be found here.

Conditions on the Drake Passage determine the exact time of departure.

## Day 12 – 13: Familiar seas, familiar friends

Your return voyage is far from lonely. While crossing the Drake, you're again greeted by the vast array of seabirds remembered from the passage south. But they seem a little more familiar to you now, and you to them.

## Day 14: There and back again

Every adventure, no matter how grand, must eventually come to an end. It's now time to disembark in Ushuaia, but with memories that will accompany you wherever your next adventure lies.

## Day 6 – 8: (Alternate program if the route to the south of Crystal Sound/Hanusse Bay is blocked by ice)

You may take a course around the western side of Adelaide Island to reach Marguerite Bay. Should ice conditions also not allow for this approach, you could continue the program by exploring the Antarctic Peninsula in and around the Penola and Gerlache Straits.

### Included in this voyage

- Voyage aboard the indicated vessel as indicated in the itinerary
- All meals throughout the voyage aboard the ship including snacks, coffee and tea.
- All shore excursions and activities throughout the voyage by Zodiac.
- Program of lectures by noted naturalists and leadership by experienced expedition staff.
- Free use of rubber boots and snowshoes.
- Luggage transfer from pick-up point to the vessel on the day of embarkation, in Ushuaia.
- Pre-scheduled group transfer from the vessel to the airport in Ushuaia (directly after disembarkation).
- All miscellaneous service taxes and port charges throughout the programme.
- Comprehensive pre-departure material.

**Excluded from this voyage**

*Any airfare, whether on scheduled or charter flights*

*Pre- and post- land arrangements.*

*Passport and visa expenses.*

*Government arrival and departure taxes.*

*Meals ashore.*

*Baggage, cancellation and personal insurance (which is strongly recommended).*

*Excess baggage charges and all items of a personal nature such as laundry, bar, beverage charges and telecommunication charges.*

*The customary gratuity at the end of the voyages for stewards and other service personnel aboard (guidelines will be provided).*

ACTIVITIES YOU CAN PARTICIPATE IN

Diving  
640 USD  
1 places left



You must be advanced and experienced in dry suit and cold water diving. Diving is subject to local ice and weather conditions.

## CABINS & PRICES

### Quadruple Porthole



1 porthole  
2 upper & lower berths  
Private shower & toilet  
Desk & chair  
Flatscreen TV  
Telephone & WiFi (supplemented)  
Hair dryer  
Ample storage space  
This cabin is suitable for families traveling with children, or passengers who do not require a twin or more luxurious cabin



Complete cabin  
Price for the complete cabin, fully occupied.

30200 USD



Sharing berth  
Share your cabin with others for the best price

7550 USD

### Triple Porthole



1 porthole  
1 upper berth & 2 lower berths  
Private shower & toilet  
Desk & chair  
Flatscreen TV  
Telephone & WiFi (supplemented)  
Hair dryer  
Ample storage space  
This cabin is suitable for families traveling with children, or passengers who do not require a twin or more luxurious cabin



Complete cabin  
Price for the complete cabin, fully occupied.

27750 USD



Sharing berth  
Share your cabin with others for the best price

9250 USD

### Twin Porthole



1 porthole  
2 lower berths  
Private shower & toilet  
Desk & chair  
Flatscreen TV  
Telephone & WiFi (supplemented)  
Hair dryer  
Ample storage space



Complete cabin  
Price for the complete cabin, fully occupied.

18500 USD



Single cabin  
Price for the complete cabin occupied by 1 person (1.7x the shared rate).

15725 USD



Sharing berth  
Share your cabin with others for the best price

9250 USD

Twin Window



- 1 window
- 2 lower berths
- Private shower & toilet
- Desk & chair
- Flatscreen TV
- Telephone & WiFi (supplemented)
- Hair dryer
- Ample storage space

Complete cabin  
Price for the complete cabin, fully occupied. 19400 USD

Single cabin  
Price for the complete cabin occupied by 1 person (1.7x the shared rate). 16490 USD

Sharing berth  
Share your cabin with others for the best price 9700 USD

Twin Deluxe



- 2 windows
- 2 lower berths
- Private shower & toilet
- Desk & chair
- Flatscreen TV
- Telephone & WiFi (supplemented)
- Hair dryer
- Ample storage space
- These cabins are corner cabins and are slightly more spacious than the normal twin porthole/window cabins

Complete cabin  
Price for the complete cabin, fully occupied. 20500 USD

Single cabin  
Price for the complete cabin occupied by 1 person (1.7x the shared rate). 17425 USD

Sharing berth  
Share your cabin with others for the best price 10250 USD

Superior



- 2 windows
- 1 double bed
- 1 sofa bed
- Private shower & toilet
- Desk & chair
- Flatscreen TV
- Telephone & WiFi (supplemented)
- Refrigerator
- Coffee & tea maker
- Hair dryer
- Ample storage space

Complete cabin  
Price for the complete cabin, fully occupied. 21800 USD

Single cabin  
Price for the complete cabin occupied by 1 person (1.7x the shared rate). 18530 USD